



Dr Val Snewin  
EDCTP Forum  
Building Bridges for Better Health

Ouagadougou, Burkina Faso  
22-24 October 2007

**Research  
capacity in Africa**  
Strengthening relationships  
between UK and African institutes.

Expressions of interest invited.  
Deadline: 14 February 2008.



**welcome**trust

# Public Health and Tropical Medicine Fellowships

Fellowship	Name	Country	Amount	Duration	Awarded
Research Training Fellowship	Dr Omolola Ayoola	Nigeria	£427,000	4 years	December 06
	Dr Shane Norris	South Africa	£122,000	3 years	
	Dr Thomas Scriba	South Africa	£174,000	4 years	
Intermediate Fellowship	Dr Mallika Imwong	Thailand	£514,000	5 years	March 07
Research Training Fellowship	Dr Abdisalan Noor	Kenya	£287,000	4 years	
	Dr Graham Meintjes	South Africa	£345,000	4 years	
Master's Fellowship	Mr Charles Sande	Kenya	£110,000	30 months	May 07
	Miss Gicheru Ngatiri	Kenya	£101,000	30 months	
	Ms Robi Okara	Kenya	£72,000	30 months	
	Mr Francis Wafula	Kenya	£81,000	30 months	
	Dr Amit Arjyal	Nepal	£69,000	30 months	
	Ms Kerryn van Veen	South Africa	£28,000	30 months	
	Dr Joseph Okebe	Gambia	£66,000	30 months	
	Mr Eric Obikeze	Nigeria	£67,000	30 months	



# The Research Environment



*“To promote the best conditions for research and the use of knowledge”*

# Health Research Capacity Strengthening Initiative

- Partnership between UK Department for International Development and Wellcome Trust
- Joined by the International Development Research Centre, Canada: track record strengthening health systems in Africa and a financial contribution to the project
- Taking place in Kenya and Malawi (£10 million to each country)
- Scoping mission led to a 6-month Inception phase via two National Task Forces to develop programmes of work



# Health Research Capacity Strengthening Initiative

Focused on Kenya and Malawi

- Aims to:
  - ♦ strengthen capacity for generation of health research knowledge
  - ♦ improve its use in evidence-based decision making, policy formulation and implementation
- Main activities:
  - ♦ support and train promising individual scientists
  - ♦ strengthen key academic research and policy-making institutions
  - ♦ facilitate collaborative engagement of national representatives
  - ♦ improve regulation and co-ordination of the national research environment





## Health Research Capacity Strengthening Initiative - update

- Task Forces in Kenya and Malawi (August-December 2006)
- Steering Group visit and feedback on drafts (January 2007)
- Project documents received and reviewed (Jan/Feb 2007)
- Kenya and Malawi Interim Committees formed (March 2007)
- Wellcome Trust Board of Governors sign-off (March 2007)
- Development of “HRCS Learning” to link Kenya and Malawi
- DFID and WT legal and financial issues under discussion
- DFID approval (September 2007)
- Funding awarded based upon agreed milestones and incubation period
- Plan for official launch events – early 2008

# Keys to Capacity Strengthening of African Institutions

## KEMRI-Wellcome Trust meeting, Kilifi, Kenya

April 2007

**Purpose:** an expert meeting to explore sustainable capacity building in African universities and research institutes in endemic diseases research

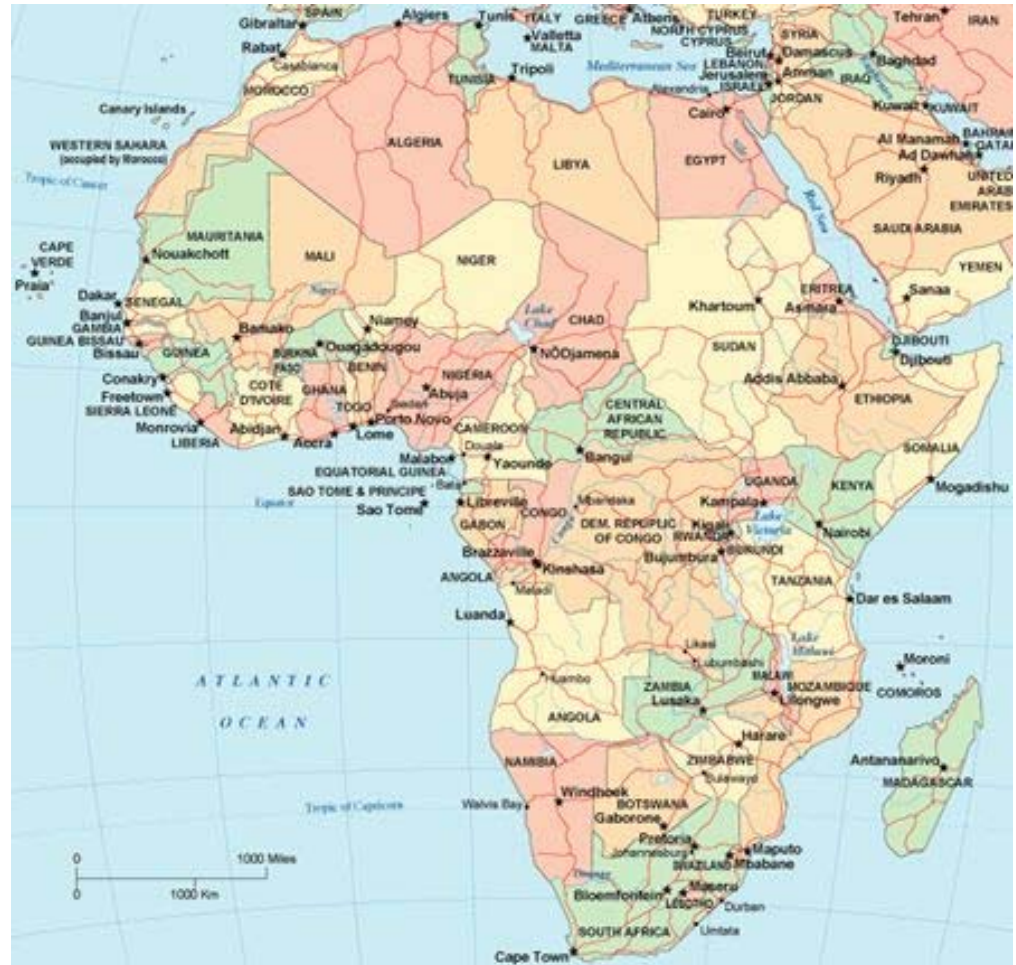
**Aim:** to consult with African Institutions engaged in health research and identify what would be required to build health research capacity within their institutions



# Kilifi meeting – African Institution representatives

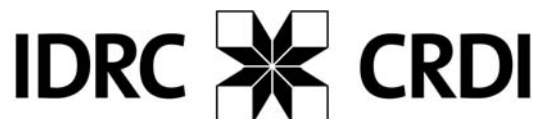
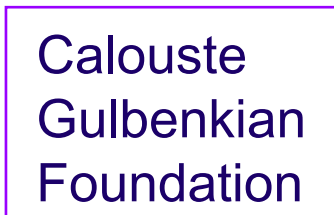
Representatives of 30 African Institutions from:

- Burkina Faso
- Cameroon
- Chad
- Ethiopia
- The Gambia
- Ghana
- Kenya
- Madagascar
- Malawi
- Mozambique
- Niger
- South Africa
- Senegal
- Tanzania
- Tunisia
- Uganda





# Kilifi meeting - Funders representatives



# Output: Kilifi meeting Menu of Options

- Feeding the pipeline of health researchers
- Raising the profile of science and health research
- Career pathways (critical mass, recruitment and retention)
- Supporting senior scientists as a priority
- Grant and Fellowship schemes
- Institutional support
- Funding mechanisms as drivers of change
- Networks and partnerships





## Research capacity in Africa

Strengthening relationships between UK and African institutes.

Expressions of interest invited.  
Deadline: 14 February 2008.



# Research Capacity in Africa

## Strengthening African Higher Education and Research Institutes

- To create equitable and sustainable networks and partnerships between institutions through South-South and North-South linkages
- To build a critical mass of local research capacity geared to national priorities
- To support human resources and infrastructure necessary for the development of the administrative, governance, financial and management
- To develop and build leadership at individual, institutional and national levels so countries can better initiate and lead research activities
- To support research leaders to act as beacons and role models to enthuse young scientists to develop research careers
- Call for proposals launched in September 2007 (deadline 14 February 2008)

[www.wellcome.ac.uk/globalhealth](http://www.wellcome.ac.uk/globalhealth)

# Capacity Strengthening Initiatives

## EDCTP Networks of Excellence

- Clinical trial focus through training and mentoring
- HIV, malaria and TB
- Regional networks of excellence leading to a Pan African initiative

## Wellcome Trust Research Capacity in Africa

- University research focus through financial, leadership and other institutional support
- Health and other research areas
- Consortia of institutions (north and south, universities and institutes)



## Research capacity in Africa

Strengthening relationships between UK and African institutes.

Expressions of interest invited.  
Deadline: 14 February 2008.



The Wellcome Trust is an independent charity funding research to improve human and animal health.

### News and features

**Press release: Rebound**  
UK's first exhibition examining the changing perception of HIV in London.

**Press release: Writing Medicine**  
Wellcome Trust at The Times Cheltenham Literature Festival.

**Veterinary clinical research**  
£10.7 million initiative to boost veterinary research training.

**Update: Wellcome Collection this autumn**  
Book now for upcoming London events.

**Update: Inside DNA**  
Travelling exhibition on the human genome launches in November.

**Funding: Electronic patient records and databases in research**  
Expressions of interest invited by 10 October.

### Other Wellcome sites



### Coming soon

**15 Oct:** Research Career Development Fellowship deadline for preliminary applications

**15 Oct:** Career Re-entry Fellowship deadline for preliminary applications

**17 Oct:** Adjuvant identification and development deadline for preliminary applications

**22 Oct:** Intermediate Clinical Fellows deadline for preliminary applications

**5 Nov:** Sir Henry Wellcome Postdoctoral Fellowships deadline for preliminary applications

**9 Nov:** Seeding Drug Discovery deadline for preliminary applications

### Explore the site

Select a subject...

### Current highlights

- ▶ Wellcome Trust and National Institutes of Health Four-year PhD studentships (call for proposals)
- ▶ Creative Encounters (engaging young people with science)
- ▶ Capital funding (call for proposals)
- ▶ Sir Henry Wellcome Postdoctoral Fellowship
- ▶ Broadcast Development Awards

### Quicklinks

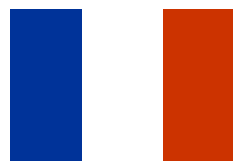
- ▶ Advanced Courses
- ▶ Conference Centre (Cambridge)
- ▶ Conference Centre (London)
- ▶ eGrants (apply online)
- ▶ Grants system project
- ▶ International funding
- ▶ Jobs at the Wellcome Trust
- ▶ Open access
- ▶ Scientific conferences
- ▶ Strategic Awards

To contact us:  
[www.wellcome.ac.uk/globalhealth](http://www.wellcome.ac.uk/globalhealth)  
[globalhealth@wellcome.ac.uk](mailto:globalhealth@wellcome.ac.uk)  
 Jimmy Whitworth  
 Val Snewin



# International Partnerships: Anglo-French Alliance

- Initiative to help researchers at institutes in English-speaking and French-speaking countries in Africa work together
- despite close connections geographically and complementarity of projects, associations between researchers and institutions of neighbouring nations are often weak
- a travel grant scheme is being established to initiate and facilitate research collaborations and visits



- *Agence Nationale de Recherche sur le Sida (ANRS)*
- *Centre National de la Recherche Scientifique (CNRS)*
- *Institut de Recherche pour le Développement (IRD)*
- *Institut National de la Santé et de la Recherche Médicale (Inserm)*
- *Institut Pasteur*



- *UK Medical Research Council (MRC)*
- *Wellcome Trust*
- *(UK Department for International Development)*

*Facilitator: Science and Technology Department of the French Embassy in London*



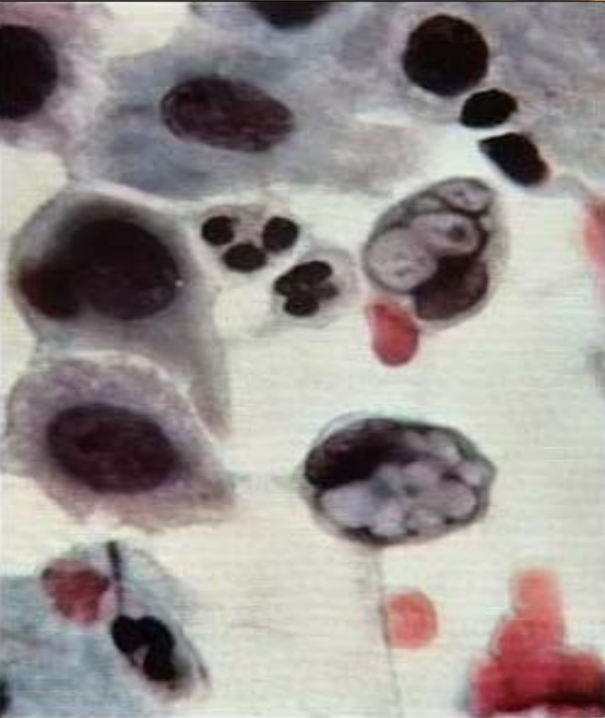
# Global partnerships

## Strategic partnerships in:

- global health
- basic science
- public health
- informatics







# Wellcome Trust-Burroughs Wellcome Fund Infectious Diseases Initiative

- Launched 1998, 13 awards, £18 m
- Trilateral international collaborations between the UK, the USA or Canada, with the 'centre of gravity' of research in the developing world
- Examples:
  - strategies for the management of multidrug-resistant tuberculosis in Kampala, Uganda  
[University of Medicine and Dentistry of New Jersey, London School of Hygiene and Tropical Medicine]
  - comprehensive studies of a new improved oral rehydration solution for diarrhoeal disease  
[Yale University, University of London]
  - strategies for the control of blinding trachoma  
[London School of Hygiene and Tropical Medicine, Johns Hopkins University, Royal Victoria Hospital in the Gambia, London Institute of Ophthalmology]





# Novel antibacterials for Gram-negative pathogens - Seeding Drug Discovery

- Wellcome Trust and GlaxoSmithKline (GSK) collaboration to develop antibacterials to combat the rise of drug-resistant hospital-acquired infections
- GSK received £4 million to accelerate development of compounds for the treatment of bacteria resistant to multiple antibacterials
- Research to target Gram-negative bacteria, such as Pseudomonas, Klebsiella and Acinetobacter which commonly cause hospital-acquired pneumonia and septic shock particularly in patients in intensive care units
- Virtually no novel-mechanism antibacterials are in development to address this need
- Gram-negative bacteria have an outer membrane surrounding the bacterial cell wall which interferes with drug penetration

